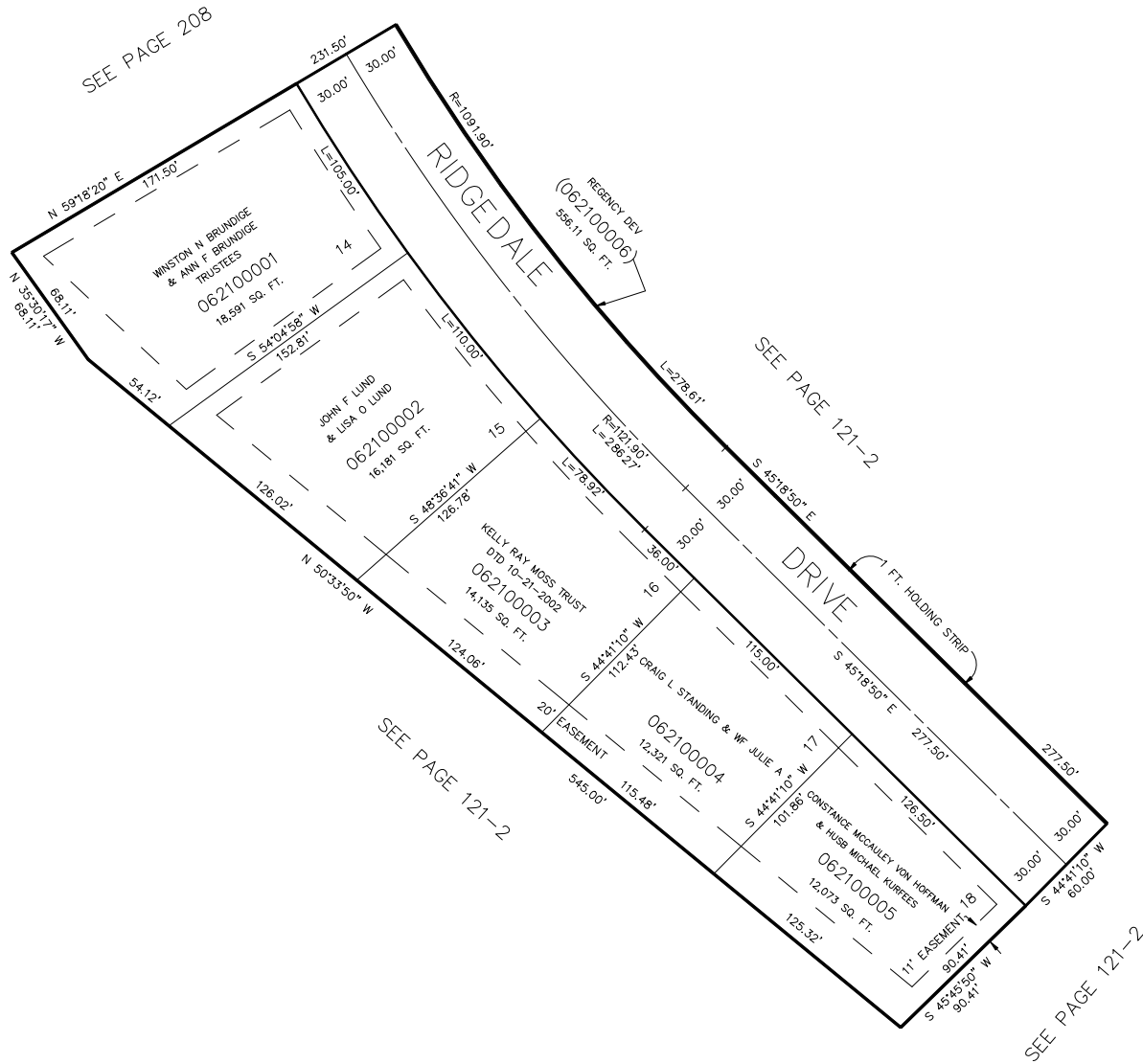


PART OF THE SW.1/4, SEC. 14, T.5N., R.1W., S.L.B. & M.
THE RIDGE AT REGENCY HEIGHTS NO. 3

IN OGDEN CITY
SCALE 1" = 50'

TAXING UNIT: 25



10' UTILITY & DRAINAGE EASEMENTS EACH
SIDE OF PROPERTY LINES AS INDICATED
BY DASHED LINES EXCEPT AS OTHERWISE
SHOWN.

FOR COMPLETE ENG DATA SEE
ORIGINAL DEDICATION PLAT IN
BOOK 34, PAGE 42 OF RECORDS